

Angular Contact Ball Bearings

Bearing No. : **NACHI 7303B**

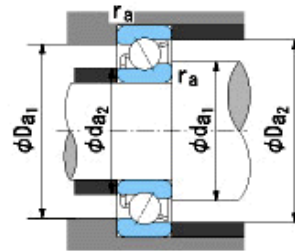
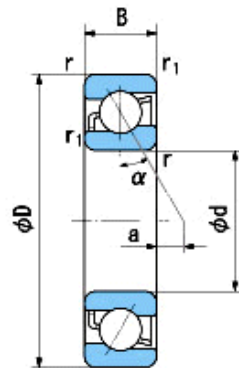
■ Bearing Type

■ Clearance

■ Tolerance Class

Dimensions

$d = 17$ $\begin{matrix} 0 \\ -0.008 \end{matrix}$
 $D = 47$ $\begin{matrix} 0 \\ -0.011 \end{matrix}$
 $B = 14$ $\begin{matrix} 0 \\ -0.120 \end{matrix}$
 $r = 1 \sim 1.5$
 (Radial Direction)
 $r = 1 \sim 3$
 (Axial Direction)
 $r_1 = 0.6 \sim 1$
 (Radial Direction)
 $r_1 = 0.6 \sim 2$
 (Axial Direction)
 $a = 6.4$



Dimensions

$da_1(\min) = 23$
 $da_2(\min) = 21$
 $Da_1(\max) = 41$
 $Da_2(\max) = 43.4$
 $ra(\max) = 1$
 $ra_1(\max) = 0.6$
 Mass = 0.12 kg

Basic Dynamic Load Rating C_r :	15,200 N
Basic Static Load Rating C_o :	8,250 N
Limiting Speed ;	
Grease Lubrication :	13,000 min^{-1}
Oil Lubrication :	17,000 min^{-1}

	INNER RING	OUTER RING
O.D.Surface Runout with Side :		-
Axial Runout with Bore :	-	
Axial Runout with Raceway :	-	
Width Variation :	0.020	0.020
Radial Runout :	0.010	0.020